

Contact Us:

Email: [sales@premier-metals.com](mailto:sales@premier-metals.com)

Phone: 310-532-6185

[www.premier-metals.com](http://www.premier-metals.com)



NOTES ON SYMBOLS

" $\bar{Y}$ " (and " $\bar{X}$ ") = LOCATING DIMENSIONS FOR AXIS XX-YY.

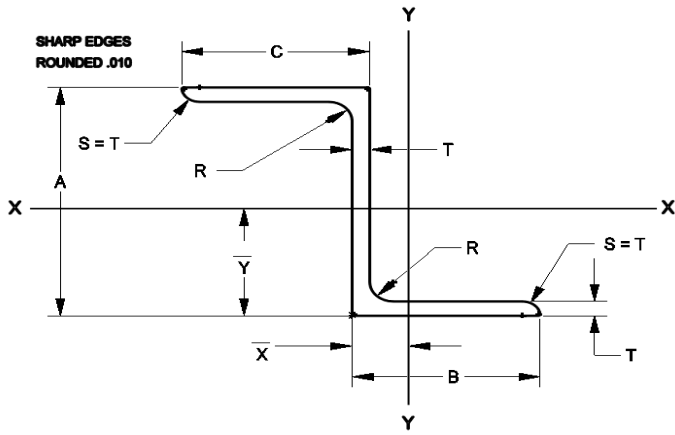
$I_{xx}$  (and  $I_{yy}$ ) = MOMENT OF INERTIA ABOUT XX and YY.

$p_{xx}$  (and  $p_{yy}$ ) = RADIUS OF GYRATION ABOUT XX and YY.

AND or AMS Extrusion Number	NOMINAL DIMENSIONS					AREA Square Inches	SECTION ELEMENTS						
	A	B	C	T	R		$\bar{y}$	$\bar{x}$	$I_{xx}$	$I_{yy}$	$p_{xx}$	$p_{yy}$	
	Inches						Inch		Inches <sup>4</sup>		Inch		
AND10139-0401	.500	.625	.375	.050	.094	.0727	.211	.105	.0027	.0037	.191	.227	
AND10139-0402				.063	.125	.0916	.212	.110	.0033	.0043	.189	.218	
AND10139-0403		.750		.050	.094	.0790	.197	.150	.0030	.0055	.194	.264	
AND10139-0404				.063	.125	.0995	.198	.154	.0035	.0067	.188	.259	
AND10139-0501	.625	.625	.375	.050	.094	.0790	.267	.0985	.0047	.0037	.244	.215	
AND10139-0502				.063	.125	.0994	.268	.104	.0057	.0044	.239	.210	
AND10139-0503		.750		.050	.094	.0852	.249	.141	.0051	.0056	.244	.256	
AND10139-0504				.063	.125	.107	.251	.145	.0061	.0068	.238	.251	
AND10139-0505	1.000	.750	.063	.125	.147	.282	.121	.0095	.0245	.254	.409		
AND10139-0601	.750	.625	.375	.050	.094	.0852	.324	.0931	.0073	.0037	.293	.208	
AND10139-0602				.063	.125	.107	.325	.0984	.0088	.0044	.287	.203	
AND10139-0603		.750		.050	.094	.0916	.303	.133	.0078	.0057	.292	.250	
AND10139-0604				.063	.125	.115	.305	.138	.0095	.0069	.287	.244	
AND10139-0605	1.000	.750	.063	.125	.155	.340	.116	.0145	.0246	.306	.399		
AND10139-0701	.875	.625	.375	.063	.125	.115	.382	.0937	.0128	.0045	.334	.197	
AND10139-0702				.063		.123	.360	.131	.0137	.0070	.334	.238	
AND10139-0703		.750		.078	.148	.359	.139	.0158	.0081	.327	.234		
AND10139-0704				.875	.500	.050	.094	.110	.367	.136	.0135	.0102	.350
AND10139-0705	.063	.139	.368			.141	.0164	.0124	.344	.299			
AND10139-0706	.750	.500	.078	.125	.167	.368	.149	.0191	.0146	.337	.296		
AND10139-0707			.063		.163	.398	.112	.0207	.0247	.357	.390		
AND10139-0708	1.000	.750	.078	.125	.197	.398	.120	.0242	.0294	.351	.387		
AND10139-1001	1.000	.625	.375	.050	.094	.0977	.439	.084	.0144	.0037	.384	.196	
AND10139-1002				.050		.104	.414	.120	.0154	.0058	.385	.236	
AND10139-1003		.750		.078	.125	.158	.415	.133	.0220	.0082	.374	.229	
AND10139-1004				.078		.177	.424	.144	.0271	.0148	.385	.291	
AND10139-1005		.875	.500	.094	.125	.209	.423	.152	.0299	.0169	.378	.285	
AND10139-1006				.063		.155	.406	.175	.0232	.0171	.388	.332	
AND10139-1007		1.000	.750	.078	.125	.187	.404	.184	.0277	.0203	.385	.330	
AND10139-1101	1.125	.625	.375	.063	.125	.131	.499	.0862	.0235	.0045	.424	.186	
AND10139-1102				.050		.123	.480	.125	.0212	.0103	.444	.290	
AND10139-1103		.875		.500	.063	.125	.155	.481	.130	.0297	.0126	.438	.285
AND10139-1104					.078		.187	.480	.138	.0348	.0148	.432	.282
AND10139-1105		.750	.500	.094	.125	.220	.480	.146	.0398	.0170	.425	.278	
AND10139-1106				.063		.178	.469	.178	.0358	.0268	.448	.388	
AND10139-1107		1.125	.625	.078	.125	.216	.468	.187	.0422	.0320	.442	.385	
AND10139-1108	.094			.256		.468	.196	.0484	.0373	.435	.382		

PART MARKING AND DOCUMENTATION MAY BE EITHER AMS 10139 OR AND10139.

(For reference only)



Contact Us:

Email: [sales@premier-metals.com](mailto:sales@premier-metals.com)

Phone: 310-532-6185

[www.premier-metals.com](http://www.premier-metals.com)



NOTES ON SYMBOLS

" $\bar{Y}$ " (and " $\bar{X}$ ") = LOCATING DIMENSIONS FOR AXIS XX-YY.

$I_{xx}$  (and  $I_{yy}$ ) = MOMENT OF INERTIA ABOUT XX and YY.

$p_{xx}$  (and  $p_{yy}$ ) = RADIUS OF GYRATION ABOUT XX and YY.

AND or AMS Extrusion Number	NOMINAL DIMENSIONS					AREA Square Inches	SECTION ELEMENTS								
	A	B	C	T	R		$\bar{Y}$	$\bar{X}$	$I_{xx}$	$I_{yy}$	$p_{xx}$	$p_{yy}$			
	Inches						Inch		Inches <sup>4</sup>		Inch				
AND10139-1201	1.250	.750	.500	.063	.125	.155	.565	.0906	.0360	.0089	.483	.240			
AND10139-1202				.078		.187	.564	.0983	.0407	.0097	.466	.228			
AND10139-1203				.063		.178	.546	.133	.0438	.0206	.496	.340			
AND10139-1204		.094	.256	.545		.150	.0594	.0284	.482	.333					
AND10139-1205		1.250	.750	.078		.245	.532	.189	.0610	.0476	.499	.436			
AND10139-1206				.094		.291	.532	.198	.0703	.0554	.492	.437			
AND10139-1301	1.375	1.000	.625	.063	.125	.186	.604	.129	.0547	.0207	.542	.334			
AND10139-1302				.078		.226	.604	.137	.0648	.0246	.536	.330			
AND10139-1303				.125		.391	.588	.208	.1085	.0693	.527	.421			
AND10139-1401	1.500	.750	.500	.063	.125	.170	.684	.0851	.0556	.0089	.572	.229			
AND10139-1402				.078		.206	.683	.0928	.0657	.0105	.564	.226			
AND10139-1403		1.000	.625	.094		.279	.661	.141	.0920	.0286	.574	.320			
AND10139-1404				.125		.359	.660	.157	.1133	.0351	.561	.313			
AND10139-1405				.094		.314	.645	.187	.1082	.0559	.587	.422			
AND10139-1601	1.750	.750	.500	.078	.125	.226	.803	.0881	.0956	.0106	.650	.216			
AND10139-1602				.094		.267	.802	.0953	.1104	.0122	.643	.213			
AND10139-1603		1.000	.625	.078		.255	.779	.126	.1149	.0249	.671	.312			
AND10139-1604				.094		.338	.760	.177	.1558	.0564	.679	.409			
AND10139-2001	2.000	.750	.500	.063	.125	.202	.924	.0768	.1112	.0090	.742	.211			
AND10139-2002				.094		.326	.897	.128	.1839	.0290	.751	.298			
AND10139-2003		1.250	.750	.078		.304	.877	.160	.1833	.0487	.777	.400			
AND10139-2004				.094		.361	.876	.168	.2138	.0577	.769	.396			
AND10139-2005				.125		.516	.858	.229	.3061	.1235	.771	.489			
AND10139-2201	2.250	1.000	.750	.078	.125	.304	1.060	.0916	.2233	.0306	.857	.318			
AND10139-2202				.094		.361	1.060	.0996	.2607	.0342	.850	.308			
AND10139-2203		1.250		.750		.078	.323	.994	.153	.2422	.0490	.865	.389		
AND10139-2204						.125	.500	.992	.176	.3563	.0713	.844	.378		
AND10139-2401	2.500	.875	.750	.094	.125	.373	1.212	.0705	.3207	.0266	.927	.267			
AND10139-2402				1.125		.750	.094	.397	1.143	.124	.3508	.0450	.941	.337	
AND10139-2403		1.375					.875	.125	.516	1.142	.140	.4426	.0559	.927	.329
AND10139-2404								.094	.432	1.119	.162	.3989	.0816	.961	.435
AND10139-2405		.125		.563		1.118	.178	.5063	.1020	.949	.426				
AND10139-3001	3.000	1.000	.750	.125	.125	.563	1.420	.106	.6643	.0431	1.087	.277			
AND10139-3002		1.375	.875	.125		.625	1.356	.166	.7842	.1028	1.120	.406			
AND10139-3003		1.750	1.000	.156		.845	1.303	.253	1.0797	.2408	1.131	.534			

PART MARKING AND DOCUMENTATION MAY BE EITHER AMS 10139 OR AND10139.

(For reference only)