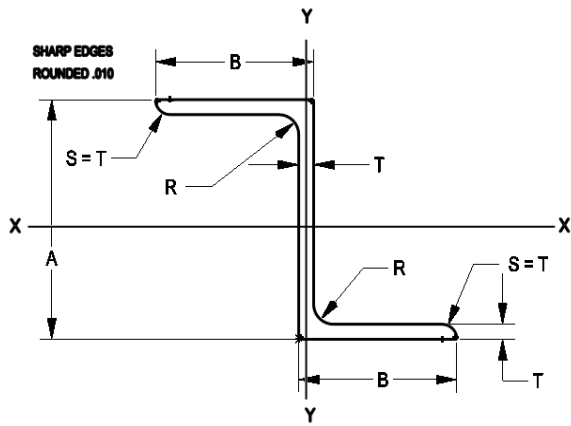




Contact Us:
 Email: sales@premier-metals.com
 Phone: 310-532-6185
www.premier-metals.com



NOTES ON SYMBOLS

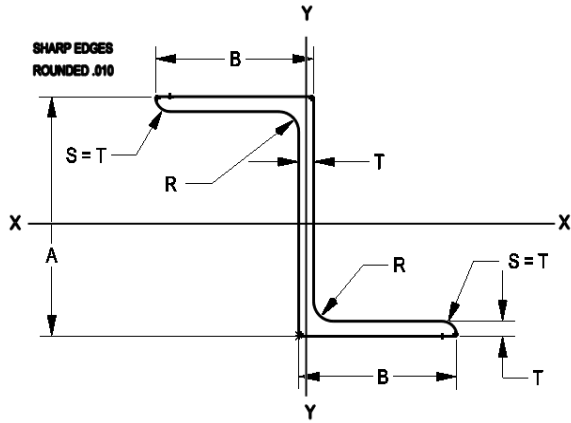
I_{xx} (and I_{yy}) = MOMENT OF INERTIA ABOUT XX and YY.
 p_{xx} (and p_{yy}) = RADIUS OF GYRATION ABOUT XX and YY.

AND or AMS Extrusion Number	NOMINAL DIMENSIONS				AREA Square Inches	SECTION ELEMENTS			
	A	B	T	R		I_{xx}	I_{yy}	p_{xx}	p_{yy}
	Inches				Inches ⁴	Inch		Inch	
AND10138-0401	.500	.625	.050	.094		.0852	.0035	.0068	.203
AND10138-0402			.063	.125	.1073	.0042	.0082	.197	.277
AND10138-0403		.750	.050	.094	.0977	.0042	.0122	.206	.353
AND10138-0404			.063	.125	.1231	.0049	.0148	.200	.346
AND10138-0501	.625	.625	.050	.094	.0916	.0060	.0069	.255	.274
AND10138-0502			.063	.125	.115	.0071	.0083	.248	.268
AND10138-0503		.750	.050	.094	.104	.0070	.0122	.259	.342
AND10138-0504			.063	.125	.131	.0084	.0148	.253	.336
AND10138-0505			1.000	.063	.125	.163	.0109	.0367	.259
AND10138-0601	.750	.625	.050	.094	.0977	.0090	.0068	.304	.264
AND10138-0602			.063	.125	.123	.0110	.0082	.298	.259
AND10138-0603		.750	.050	.094	.110	.0106	.0122	.310	.333
AND10138-0604			.063	.125	.139	.0128	.0148	.304	.326
AND10138-0605			1.000	.063	.125	.170	.0165	.0367	.312
AND10138-0701	.875	.625	.050	.094	.104	.0130	.0068	.353	.257
AND10138-0702			.063	.125	.131	.0158	.0083	.347	.251
AND10138-0703		.750	.050	.094	.117	.0151	.0122	.360	.323
AND10138-0704			.063	.125	.147	.0184	.0148	.354	.317
AND10138-0705			.078	.125	.177	.0214	.0175	.348	.314
AND10138-0706		.875	.050	.094	.129	.0172	.0197	.365	.391
AND10138-0707			.063	.125	.163	.0210	.0241	.359	.385
AND10138-0708			.078		.197	.0245	.0287	.353	.382
AND10138-0709		1.000	.063	.125	.178	.0236	.0367	.364	.454
AND10138-0710			.078		.216	.0276	.0439	.358	.451
AND10138-1001	1.000	.625	.050	.094	.110	.0176	.0068	.400	.249
AND10138-1002			.063	.125	.139	.0216	.0083	.394	.244
AND10138-1003		.750	.050	.094	.123	.0205	.0121	.408	.315
AND10138-1004			.063	.125	.155	.0251	.0147	.403	.308
AND10138-1005			.078		.187	.0294	.0175	.396	.307
AND10138-1006		.875	.063	.125	.170	.0285	.0242	.409	.377
AND10138-1007			.078		.206	.0335	.0287	.403	.373
AND10138-1008			.094		.244	.0383	.0332	.397	.369
AND10138-1009		1.000	.063	.125	.186	.0320	.0367	.415	.444
AND10138-1010			.078		.226	.0377	.0439	.408	.441

PART MARKING AND DOCUMENTATION MAY BE EITHER AMS 10138 OR AND10138.
 (For reference only)



Contact Us:
 Email: sales@premier-metals.com
 Phone: 310-532-6185
www.premier-metals.com



NOTES ON SYMBOLS

I_{xx} (and I_{yy}) = MOMENT OF INERTIA ABOUT XX and YY.
 p_{xx} (and p_{yy}) = RADIUS OF GYRATION ABOUT XX and YY.

AND or AMS Extrusion Number	NOMINAL DIMENSIONS				AREA Square Inches	SECTION ELEMENTS			
	A	B	T	R		I_{xx}	I_{yy}	p_{xx}	p_{yy}
	Inches				Inches ⁴	Inch		Inch	
AND10138-1101	1.125	.625	.063	.125		.147	.0285	.0083	.441
AND10138-1102		.875	.050	.094	.142	.0304	.0197	.464	.374
AND10138-1103			.063	.125	.178	.0374	.0241	.458	.368
AND10138-1104			.078		.216	.0441	.0287	.452	.364
AND10138-1105			.094		.256	.0507	.0332	.445	.361
AND10138-1106		.063	.210		.0467	.0530	.472	.503	
AND10138-1107		1.125	.078	.255	.0548	.0637	.464	.500	
AND10138-1108		.094	.303	.0632	.0744	.457	.496		
AND10138-1201	1.250	.750	.063	.125	.170	.0421	.0148	.497	.295
AND10138-1202		.078	.206		.0497	.0175	.491	.291	
AND10138-1203		1.000	.063		.202	.0532	.0366	.514	.428
AND10138-1204			.094		.291	.0729	.0511	.501	.419
AND10138-1205		1.250	.078		.284	.0765	.0887	.519	.558
AND10138-1206		.094	.338		.0886	.1039	.512	.555	
AND10138-1301	1.375	.750	.063	.125	.178	.0562	.0148	.543	.288
AND10138-1302		1.000	.063		.210	.0662	.0367	.562	.418
AND10138-1303			.078		.255	.0794	.0439	.558	.415
AND10138-1304			.094		.303	.0911	.0511	.549	.411
AND10138-1305		1.250	.078		.294	.0951	.0887	.569	.549
AND10138-1306			.125		.453	.1365	.1308	.549	.537
AND10138-1401	1.500	.750	.078	.125	.226	.0765	.0175	.582	.278
AND10138-1402		1.000	.078		.265	.0961	.0439	.602	.407
AND10138-1403			.094		.314	.1116	.0511	.596	.403
AND10138-1404		1.250	.094		.361	.1349	.1040	.611	.536
AND10138-1601	1.750	.750	.078	.125	.245	.1104	.0175	.671	.267
AND10138-1602		1.000	.078		.284	.1377	.0439	.696	.393
AND10138-1603		1.250	.094		.385	.1925	.1039	.707	.520
AND10138-2001	2.000	.750	.063	.125	.218	.1272	.0148	.765	.261
AND10138-2002		1.000	.094		.361	.2194	.0511	.779	.376
AND10138-2003		1.250	.094		.408	.2621	.1040	.801	.505
AND10138-2004		1.500	.125		.594	.3852	.2346	.806	.629
AND10138-2401	2.500	.750	.063	.125	.249	.2172	.0148	.934	.244
AND10138-2402		.875	.078		.323	.2890	.0288	.945	.298
AND10138-2403			.094		.385	.3383	.0333	.938	.294
AND10138-2404		1.000	.094		.408	.3723	.0512	.955	.354
AND10138-2405			.125		.531	.4707	.0636	.941	.346

PART MARKING AND DOCUMENTATION MAY BE EITHER AMS 10138 OR AND10138.
 (For reference only)